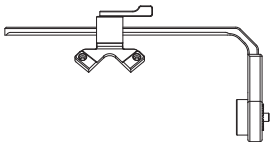


INSPIRE 2

DJI Focus Handwheel- Remote Controller Stand

User Guide

V1.0 2017.01



Disclaimer and Warning

Congratulations on purchasing your new DJI™ product. The information in this document affects your safety and your legal rights and responsibilities. Read this entire document carefully to ensure proper configuration before use. Failure to read and follow instructions and warnings in this document may result in serious injury to yourself or others, damage to your DJI product, or damage to other objects in the vicinity. This document and all other collateral documents are subject to change at the sole discretion of DJI.

By using this product, you hereby signify that you have read this disclaimer and warning carefully and that you understand and agree to abide by the terms and conditions herein. You agree that you are solely responsible for your own conduct while using this product, and for any consequences thereof.

You agree to use this product only for purposes that are proper and in accordance with all applicable laws, rules, and regulations, and all terms, precautions, practices, policies and guidelines DJI has made and may make available.

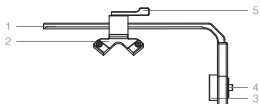
DJI accepts no liability for damage, injury or any legal responsibility incurred directly or indirectly from the use of this product. The user shall observe safe and lawful practices including, but not limited to, those set forth in this document.

Notwithstanding above, your statutory rights under applicable national legislation are not affected by this disclaimer.

DJI is a trademark of SZ DJI TECHNOLOGY CO., LTD. (abbreviated as "DJI") and its affiliated companies. Names of products, brands, etc., appearing in this document are trademarks or registered trademarks of their respective owner companies. This product and document are copyrighted by DJI with all rights reserved. No part of this product or document shall be reproduced in any form without prior written consent of or authorization from DJI.

Introduction

The DJI Focus Handwheel-Remote Controller stand makes it easier to use the aircraft Remote Controller and the DJI Focus Handwheel simultaneously. By allowing the DJI Focus Handwheel to be connected to the aircraft Remote Controller, you can fly while adjusting focus, aperture and zoom easily.

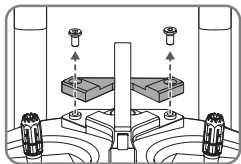


- | | |
|------------------|---------------------|
| 1. Sliding Rod | 4. Rosette Mount |
| 2. Securing Pad | 5. Securing spanner |
| 3. Securing Knob | |

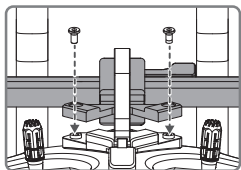
Installation

Tools Required: 1.5mm Hex Key

1. Remove the screws and the securing pad on the remote controller as shown below.



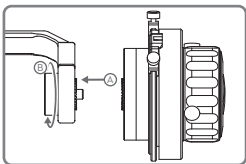
2. Align the holes on the securing pad of the DJI Focus Handwheel-Remote Controller stand with the holes on the remote controller. Insert the original screws and tighten to secure the securing pad.



- Loosen the securing spanner to adjust the rod so that it feels comfortable to you. Then return the spanner to its original position to tighten.

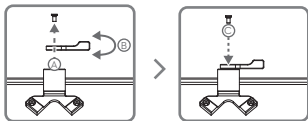


- Attach the Focus Handwheel to the rosette mount and rotate the securing knob clockwise to secure it.



Adjusting the Securing Spanner

Remove the screws on the top of the securing spanner to adjust its position if the securing spanner is hard to tighten, insert screws and tighten after adjustment.



Put the screws in the correct places during installation and removal.

Specifications

Weight: 143.56 g

DJI Support

<http://www.dji.com/support>



If you have any questions about this document,
please contact DJI by sending a message to
DocSupport@dji.com.

INSPIRE is a trademark of DJI.
Copyright © 2017 DJI All Rights Reserved.

Printed in China.